



Ice Palace Studios is a 1920's Ice Plant converted into a Film Studio and general Production Facility. Films such as Fast & Furious II, Rock of Ages, Miami Vice and Diaries of a Shopaholic, Bad Boys I and II have been shot here. With a maximum occupancy of 8,000 people, the studio is capable of producing events ranging from concerts to charity dinners to trade shows and conventions. Being that the stages are all in black, they are ideal for creating environments that are uniquely designed for the event and play a strong role for accomplishing the branding roles of producers.

Ice Palace Studios is located directly West of South Beach, South of Wynwood and North of Downtown Miami. It is easily accessible to 395 which is a short ride to Miami International Airport.

## FEATURES

- *70,000 SQ. FT. Indoor + 70,000 SQ. FT. Outdoor Space*
- *Backyard Tropical Space With Waterfalls*
- *Large Parking Lot Available*
- *Located Near Downtown, Wynwood and Miami Beach*
- *Blank Slate To Build Your Image*
- *Your Own Vendors*
- *High Ceilings*
- *Liquor sale capabilities until 5AM*

"Ice Palace studios offers a blank slate which gives our clients freedom to create whatever their branding needs are. We are also a non-union facility and we allow clients to bring in the vendors they wish to work with and offer no time restrictions or charges for overtime."



WELCOME SPACE & PATIO

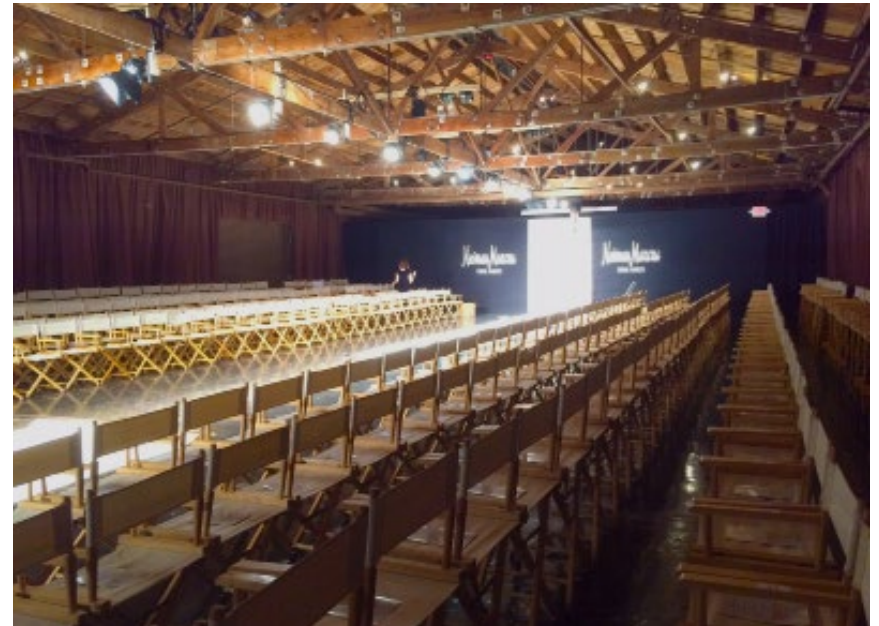




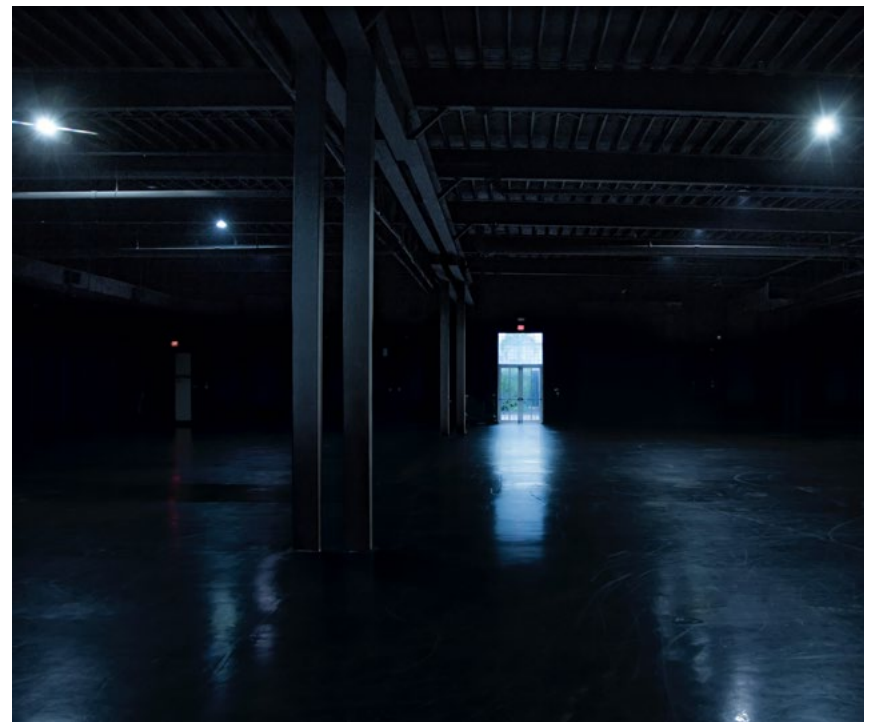


## AMBIENT TRAVELING LIGHT BOXES











- Rehearsal Space / Back of House / Event Space

Fashion



Charities



Private



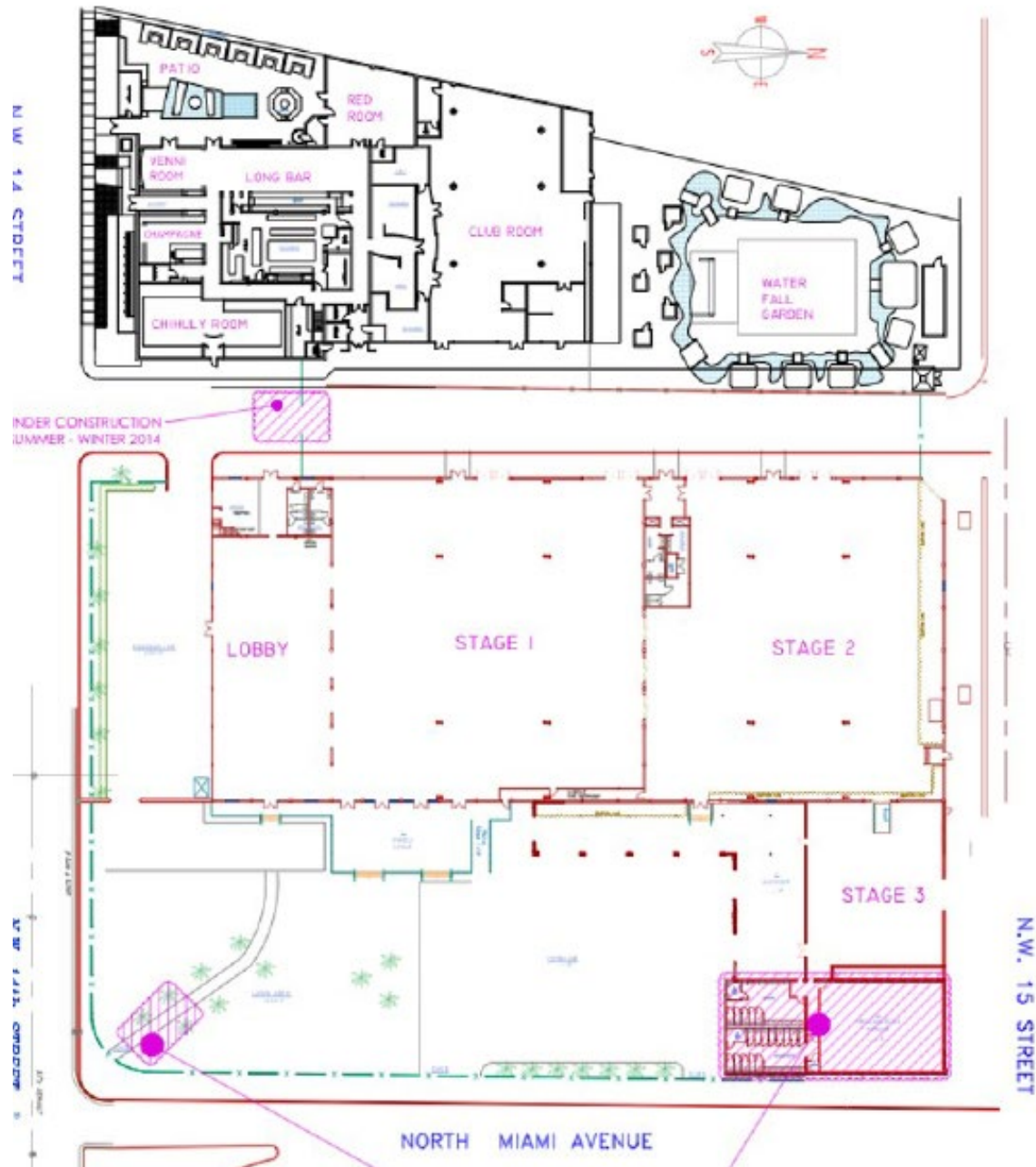








- Outdoor Lounge
- 5 Bars
- Diverse Spaces
- Commercial Kitchens
- 5AM dance license
- 40,000 Sq. Ft Indoor/Outdoor Space
- Legal Occupancy 2,455



Height & Footage	SQ. FT.	Max Height	Beam Height
Lobby	5,000	13'	13'
Stage 1	17,500	20'	18'
Stage 2	15,000	18'	16'
Total	37,500		